

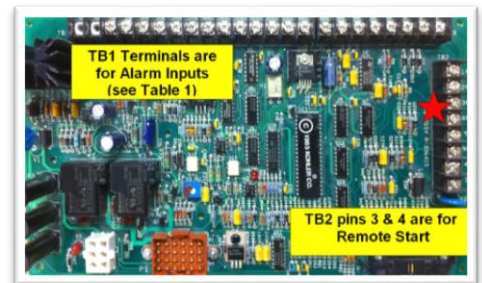
1. Unpack the monitor, antenna and the data/power cable. The 25 pin connector plugs onto the front of the OmniMetrix® Monitor. This cable includes wires to power the monitor as well as wires for alarm inputs, relay outputs and analog inputs. Take a moment to inspect all components to verify there is no shipping damage.
2. Place the antenna on the roof of the generator and route the antenna cable into the area of the generator control. The antenna used for transmitting must be installed to provide a separation distance of at least 20 cm from all persons and must not transmit simultaneously with any other antenna transmitters. BE SURE to provide a drip loop lower than the monitor to keep water from running down the antenna cable into the monitor connection.
3. Attach the monitor via its magnetic feet, on top of the engine controller or other appropriate location. Horizontal surfaces are best, but the unit may be mounted vertically or even upside down if necessary. *Note: If mounted vertically, install the monitor with the cables down to prevent water from entering the enclosure.*
4. Route the data/power cable into the generator control enclosure.
5. The monitor wires directly to the DEC3 control board using the wiring definitions shown in *Table 1*.
6. The Kohler DEC3 installation is completed by making connections to the terminal strips on the main board. The alarm condition connection points are on TB1 (long terminal strip) and the remote start terminals are on TB2 (short terminal strip). Power for the monitor comes from TB1 Terminal 42A. Be aware that this is a FUSED terminal point, and on occasion, the fuse for that terminal may be blown. After connecting the monitor, ALWAYS verify the voltage between terminals 2 (GND) and 42A (B+ = 12 or 24 VDC).
7. Attach the antenna cable to the front of the monitor, and tighten thumb tight.
8. Turn on the monitor and confirm that the LEDs light up and blink. If not, check for power on the terminal strip. If, after 5 minutes, the only LED lit is the Power LED, check the antenna mount and cable connection.
9. Allow 15 minutes for the monitor to log into the network and then call OmniMetrix at 770-209-0012 to confirm installation. Access to machine data is through the OmniView® web interface at [www.omnimetrix.net](http://www.omnimetrix.net). Contact OmniMetrix for login instructions and web training



Data/Power Cable



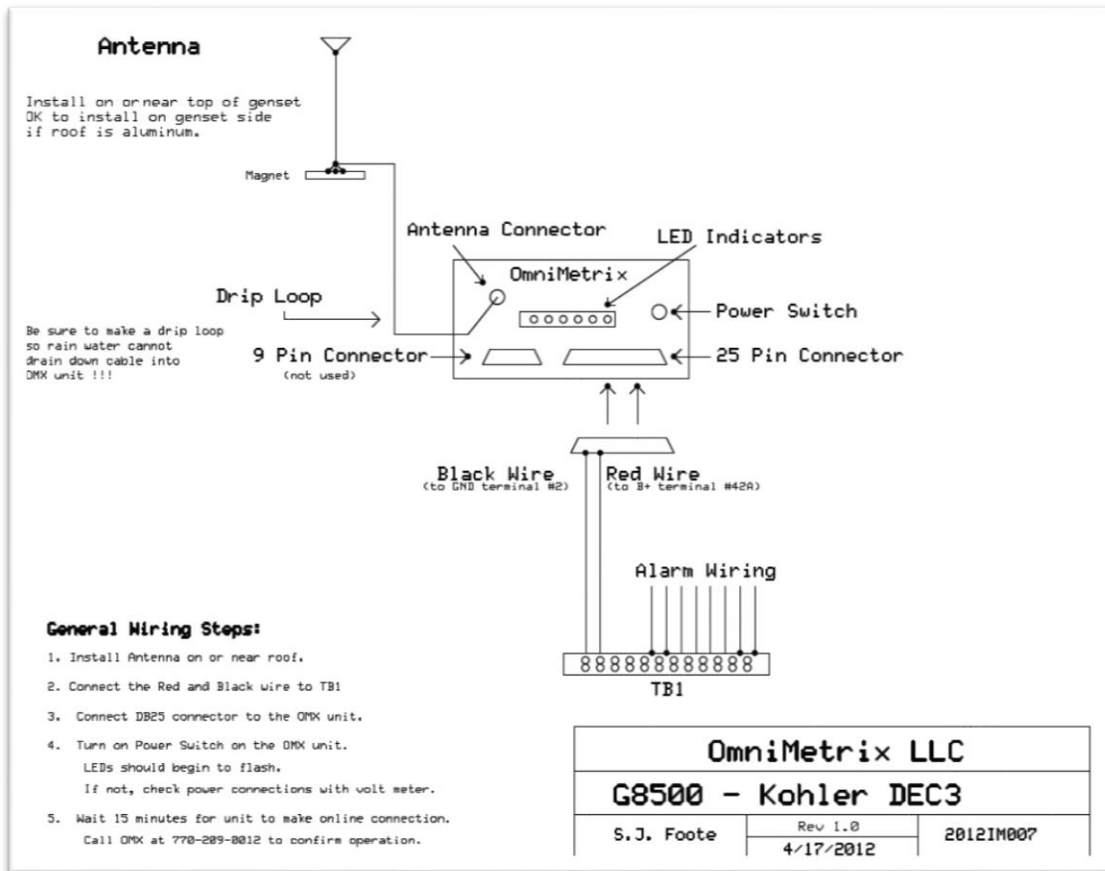
Kohler DEC3 Controller



DEC3 Control Board

WIRING TABLE		
OMN WIRE	FUNCTION	KOHLER TERMINATION
Red	Power In (9-30 Vdc)	42A or other Genset B+
Black	Ground	2
Orange	Running Input	Hour Meter + Terminal
Blue	Common Fault Input	32 or 32A
Violet	Low Fuel Input	63
Gray	Low Coolant Temp Input	35
Pink	Not in Auto Input	80
Tan	Low Oil Pressure Input	38
Yellow	Over Crank Input	12
Brown	Over Speed Input	39
White/Yellow	Remote Start (Relay A)	3 (Remote Start)
White/Brown	Remote Start Relay B	4 (Remote Start)
White/Blue	Fuel Sender Analog Input	Green Wire on Sender (option)

Table 1 – Kohler DEC 3 Wiring



If you have any questions, please call OmniMetrix Tech Support at 770-209-0012 or email at [techsupport@omnimetrix.net](mailto:techsupport@omnimetrix.net).