

This instruction sheet details the assembly and wiring of the OmniMetrix Pro Mobile unit, applied with a wind sensor, intended to perform remote wind speed surveys.

The package assumes the unit will be moved site to site, so all of the installation details are temporary. While these instructions call for using zip ties, other means are acceptable.

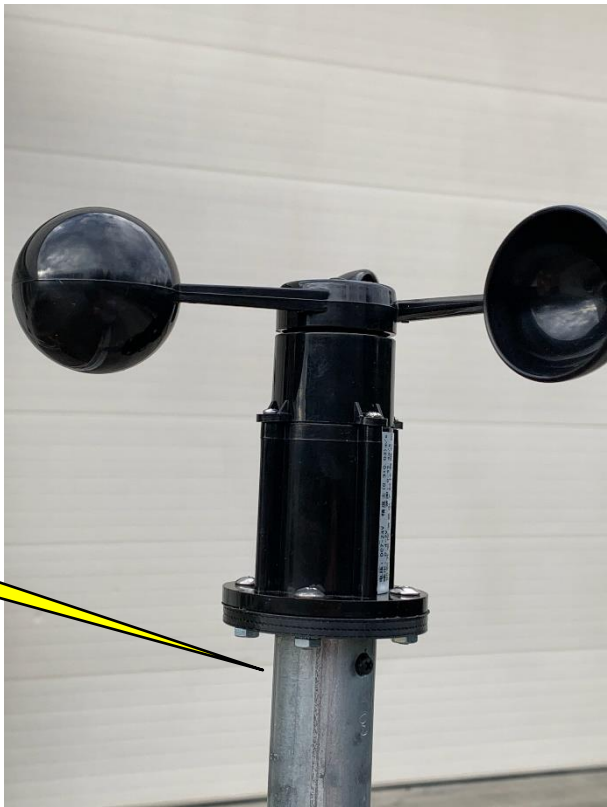
The design point calls for the unit to be attached to the site fence, away from other objects, erected to 20+ feet. The telescoping mast achieves this. The unit includes a solar panel, which is intended to help maintain the internal battery. It is not essential to the short term operation, but we recommend connecting it to avoid premature battery discharge, should we choose to run a higher data report interval. The solar panel need not be tilted by latitude. Hanging it on the fence, facing south, will meet its needs.

When the installation is complete, please call OmniMetrix Tech Support for operational confirmation.

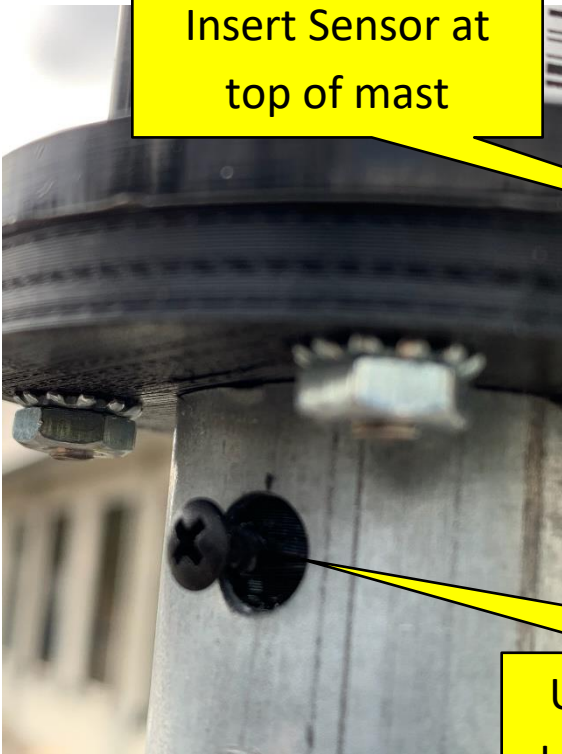
OmniMetrix Tech Support = 770-209-0012 Option 2.



Attach cable to  
Wind Sensor



Insert Sensor at  
top of mast



Use the small screw as a retainer. It  
does not need to be tight on the mast.

Drive the short rebar into the ground at the fence location chosen.  
It will be moved to different locations, so don't overdo it.

Wrap the sensor cable around the mast to control it in the wind.



Attach the wall mounts to the mast

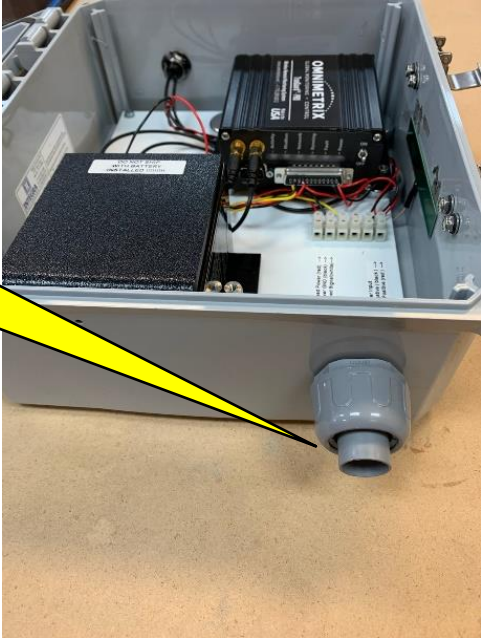
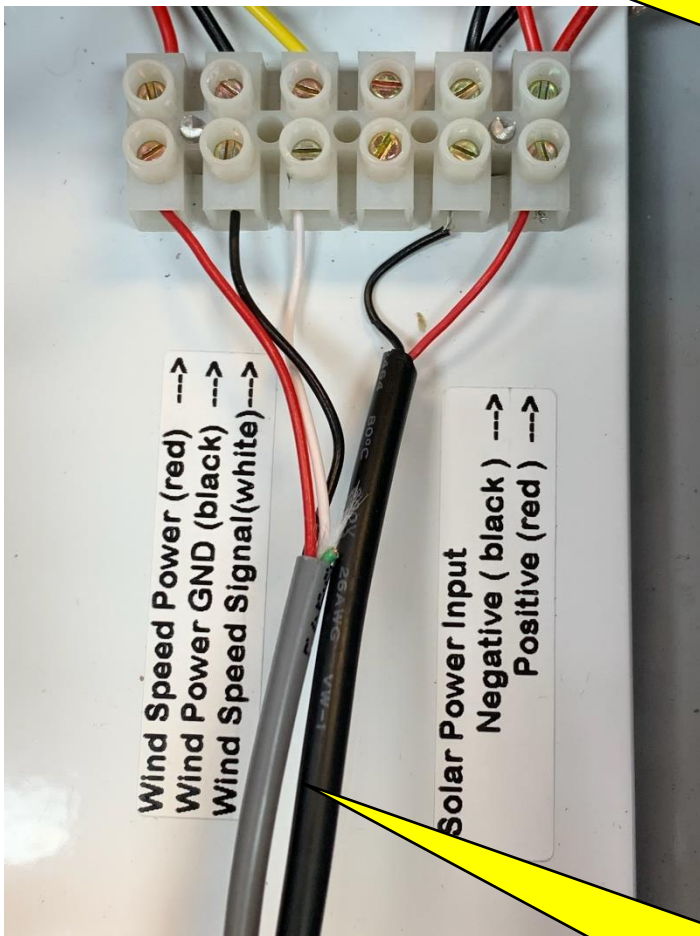
Erect the mast and zip tie the wall mounts to the fence.

Hang the solar panel on the fence, facing south, with zip ties.



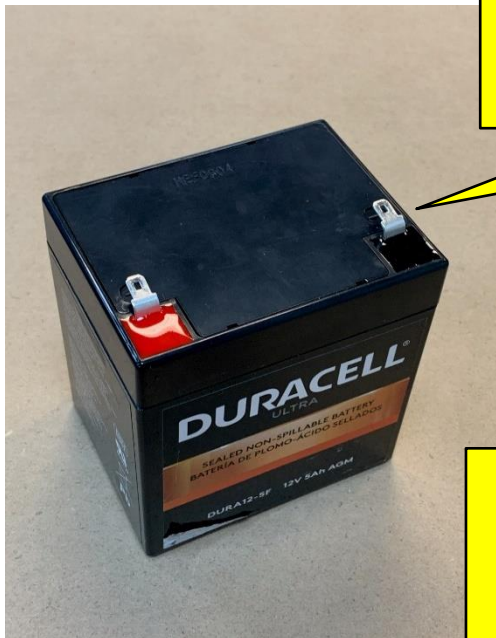
Attach the OmniMetrix enclosure to the fence using zip ties.

Route the solar panel and wind sensor wires into the enclosure



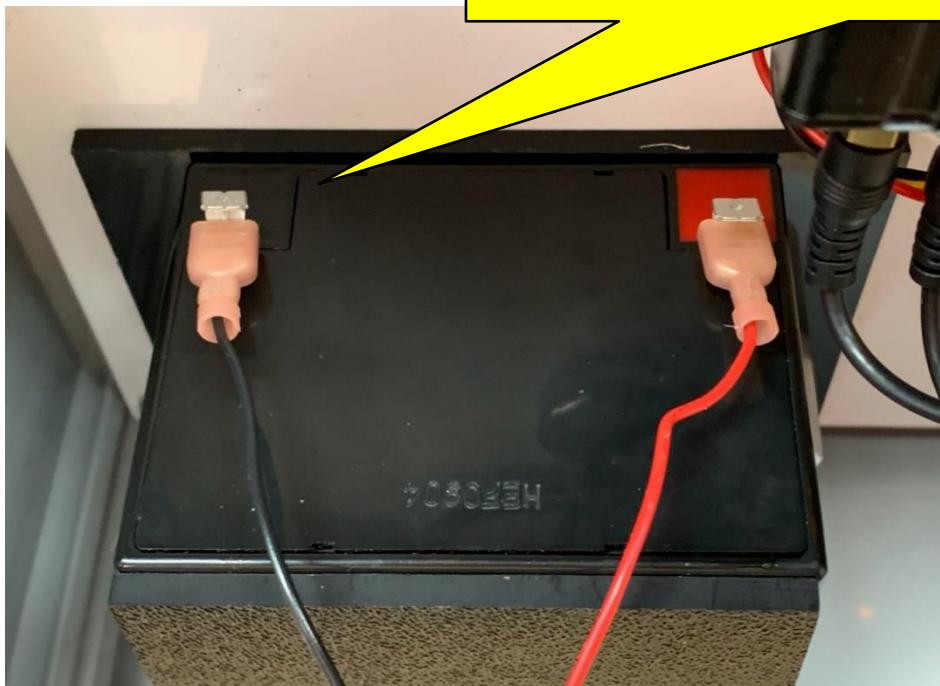
Land the wires on the wiring panel as shown, and labeled.



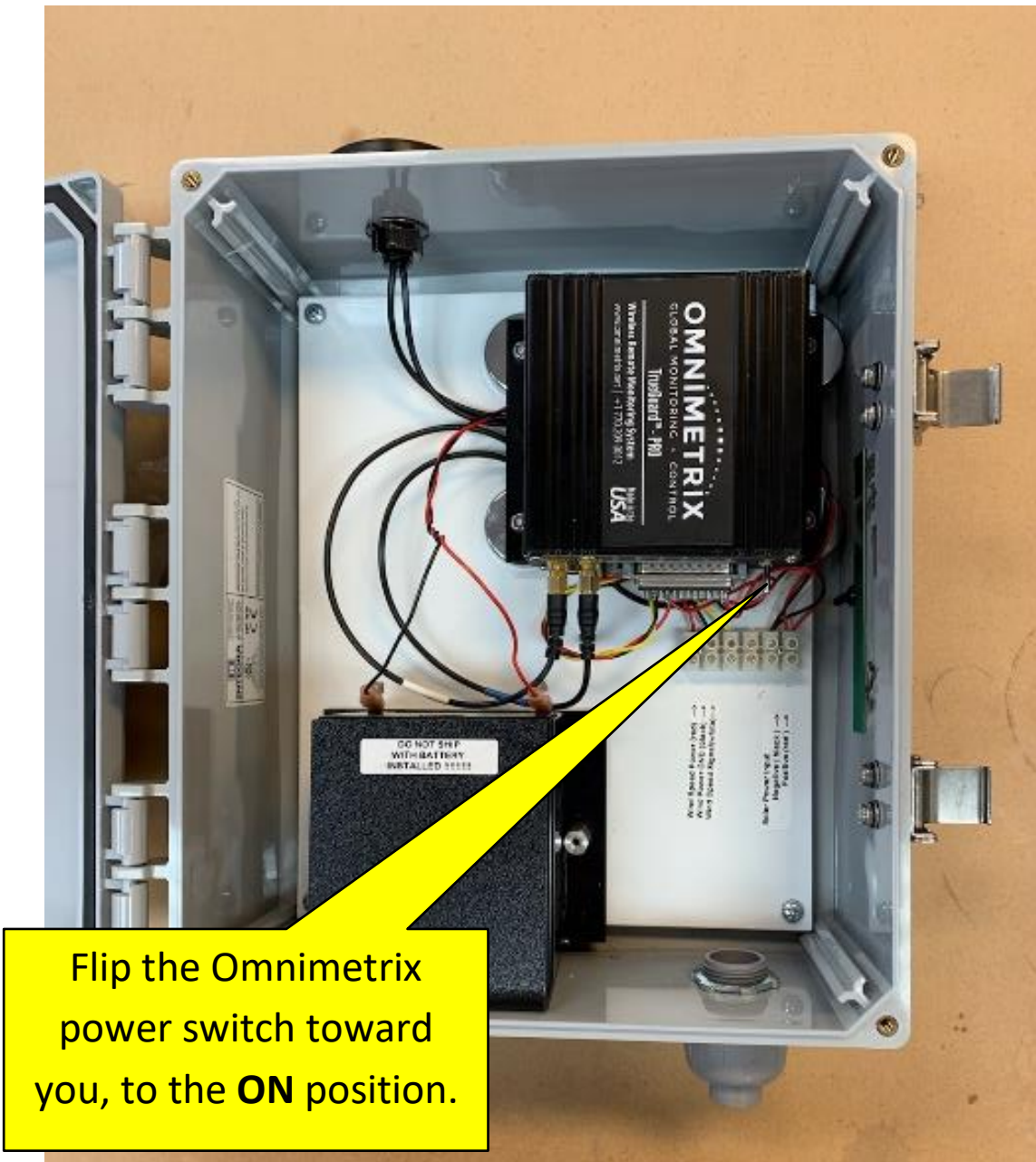


Remove the battery from the shipping box. Note its red and black polarity markings.

Insert the battery into the black, plastic holder, and connect the red and black wires with the Faston connectors, as shown.



Note: When the system is shipped to the next location, the battery MUST be removed and shipped separately. Keep the original shipping boxes for this purpose !



Flip the Omnimetrix power switch toward you, to the **ON** position.