

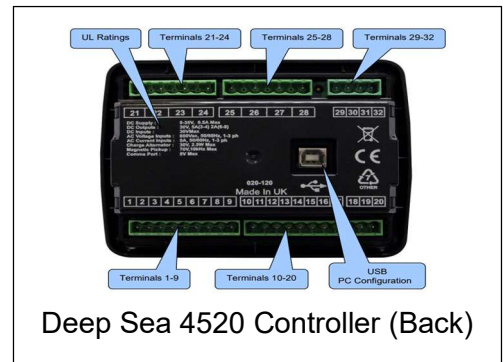
1. Unpack the monitor and antenna. Check the integrated cables for shipping damages.
2. Place the antenna vertically on the generator roof, ensuring 20 cm separation from people and other transmitters. Use a **drip loop** to prevent water damage.
3. Attach the monitor to the engine controller. Mount horizontally ideally, but vertical or upside-down is possible—install vertically with cables down to prevent water ingress.
4. Attach the antenna cable to the monitor's front and tighten it.
5. Wiring instructions listed below on Table 1.
6. DSE Configuration Suite Software to configure Digital Outputs (Table 2)
7. Allow 15 minutes for network login. Confirm installation by calling OmniMetrix or access machine data via OmniView web interface at <https://webdata.omnimetrix.net>.



TrueGuard-2 with Data/Power Cable



Deep Sea 4520 Controller

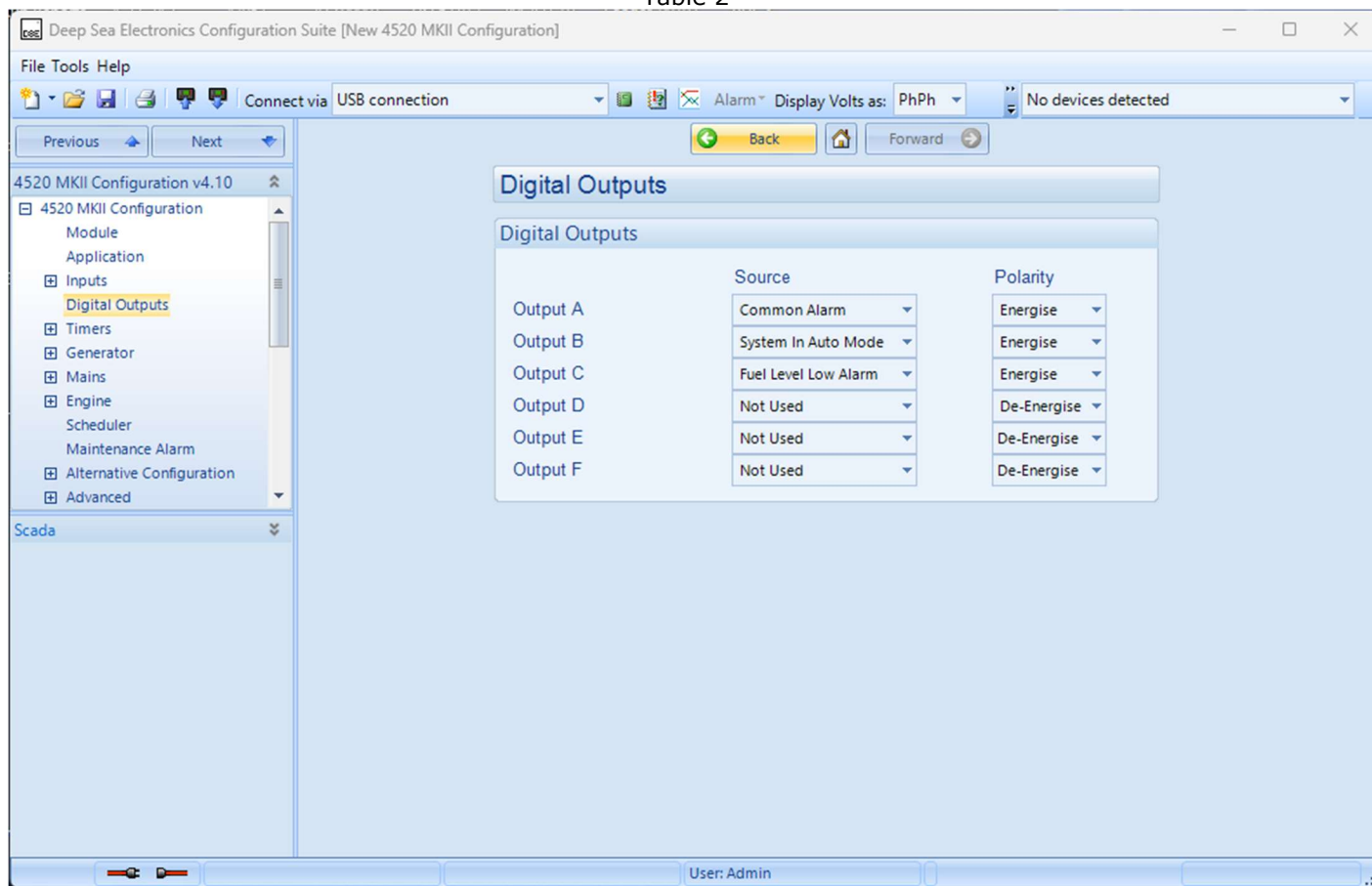


Deep Sea 4520 Controller (Back)

Table 1

Wiring Diagram		
OMN Wire	Function	PIN Termination
Red	Power In	2
Black	Ground	1
Orange	Gen Run	3
Blue	Common Alarm	14
Violet	In Auto	15
Gray	Low Fuel Alarm	16

Table 2



If you have any questions, please call OmniMetrix Tech Support on 770-209-0012 or email at techsupport@omnimetrixconnect.com