



Leveraging Technology to Protect Your Critical Assets

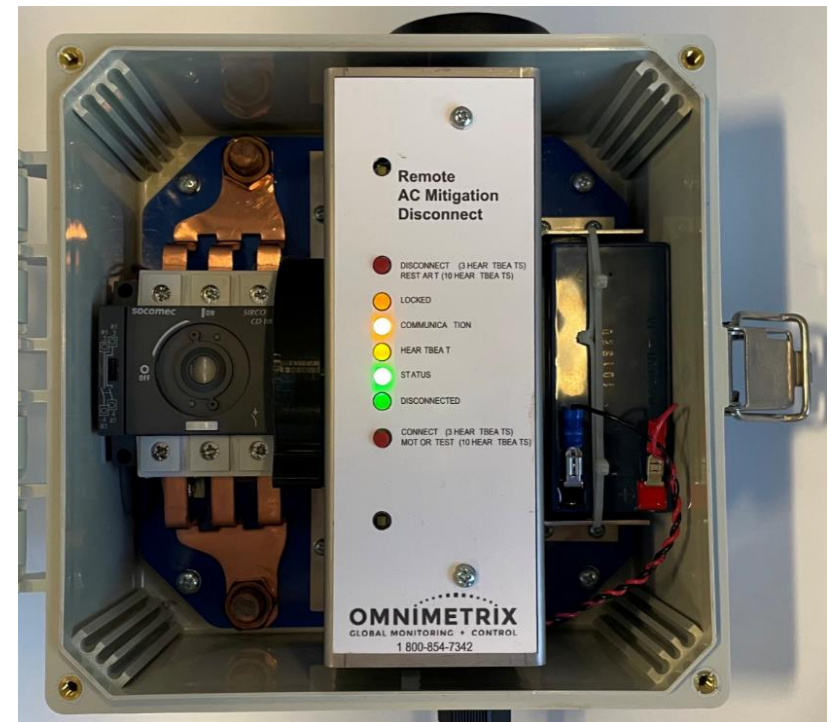
Remote AC Mitigation Disconnect by OmniMetrix

Remote AC Mitigation Disconnect “RAD”

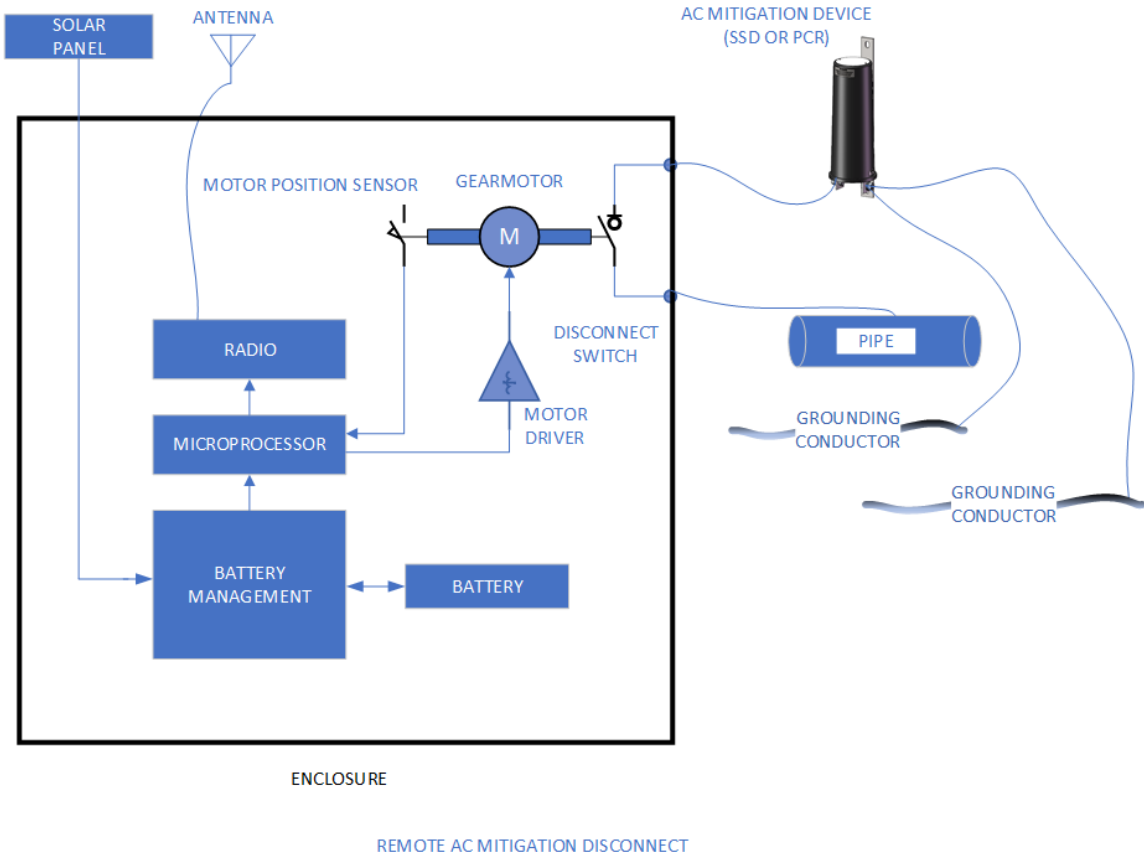
Introducing the OmniMetrix Remote AC Mitigation Disconnect:

A first of its kind device that allows pipeline operators to safely and remotely disconnect and reconnect a Solid-State Decoupler (SSD) or Polarization Cell Replacement (PCR) unit.

“The Remote AC Disconnect will play a vital role in allowing us to safely and efficiently disconnect our SSDs. We spend an enormous amount of time, energy and money to manually disconnect these today. To have the ability to perform this task with a click of the button to all my SSDs at once will save us a great deal of money and time not to mention employee safety.”



How It Works



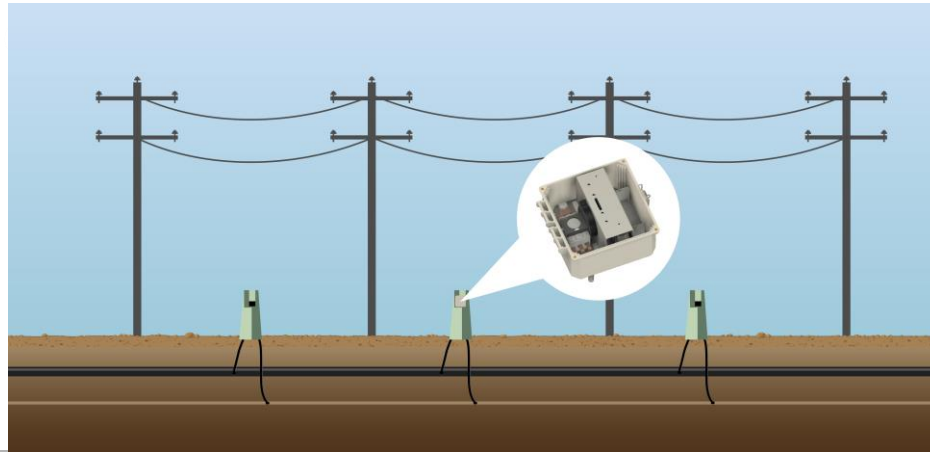
The RAD was designed to mount externally on the SSD or PCR pedestal using a NEMA 4X enclosure. It's patent pending design utilizes an internal motor drive to disconnect the AC mitigation.

Employee Safety is the Priority

The protection of employees and the public is imperative.

Working with pipelines can sometimes be a dangerous job. Why risk employee safety if there are alternatives? The RAD can eliminate risks such as:

- Environmental conditions
- Road hazards and safety
- Exposure to high AC voltage



Let Technology do the Work!

Avoid the inconvenience of manually disconnecting an SSD or PCR one-at-a-time. What could take hours or days – now takes seconds.

Send Command ×

1 Stations 2 Command 3 Notes

Select a station

Stations:

Available stations	Search station
23583	
23583	
23583	
23583	
23602	
23602	
23602	
23602	

↔

Selected stations
16548
16561
16561
16569
16569

3 Easy Steps:

1. Select 1 to many devices
2. Issue a “Connect” or “Disconnect” command
3. Provide any notes and press “Send Command”

Remote AC Mitigation Disconnect

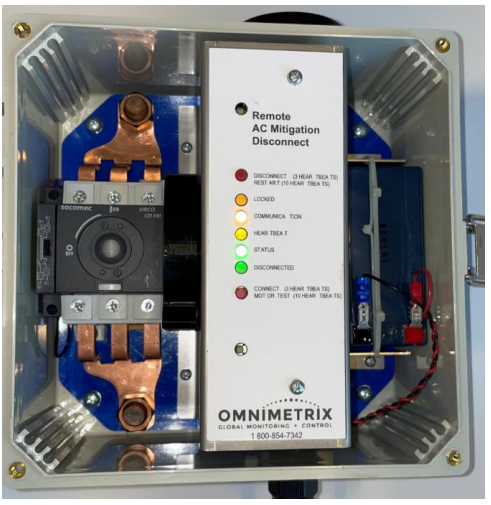
BENEFITS

- Reduce expenditures and employee costs
- Control one (1) to many SSD/PCR's at once
- Programmable disconnect/connect dates and times
- Employee safety
- Measure pipe AC voltage
- Analyze health of SSD/PCR

FEATURES

- Mechanical locking tamper protection
- Disconnect remotely or on-site
- AT&T, Verizon LTE cellular or Satellite communication options
- OTA software capabilities
- Housed in a NEMA 4X enclosure
- Solar powered with battery backup
- Built-in GPS functionality

Specifications



Size	10" x 8.5" x 4.5" (with NEMA 4X enclosure)
Power Requirements	Solar Cell & battery
Inputs	Coming Soon
Battery Type	12 VDC sealed gel cell
Antenna	Externally-mounted LTE/GPS antenna
Rated Temperature	-40°C to +70°C